

**SONY**

Hi-Fi Products  
Service Bulletin

Sony Service Company Technical Services  
A Division of Sony Corporation of America  
Sony Drive Park Ridge, New Jersey 07656

**Model:** HCD-H1600

**No. 312**

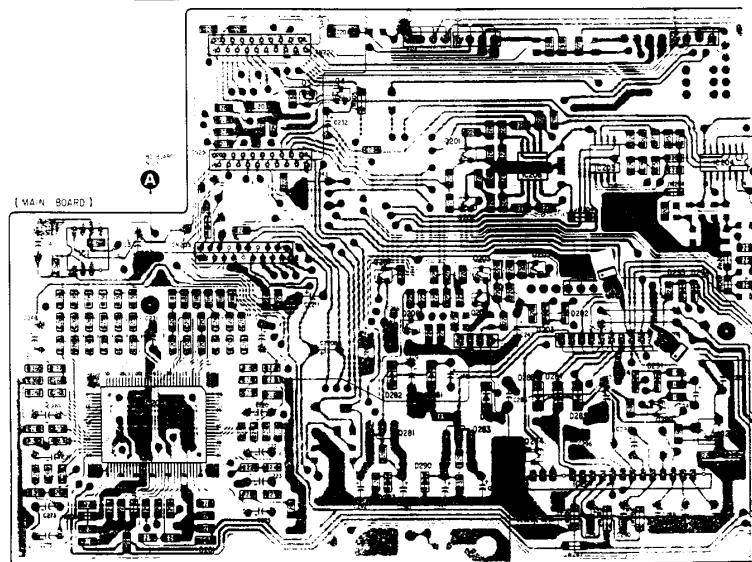
**Subject:** Missing information: Fuses added in place of jumpers **Date:** December 31, 1992

**Symptom:**  
(\*\*)

Two fuses have been added in place of two jumpers which are located just above CN205 on the Main board (grid D/8 on page 17 of the service manual). The fuses are labeled F201 and F202. The part number for the two fuses is shown in the chart below.

**Solution:** Please add the following part number to the Service Manual.

REF	DESCRIPTION	PART NUMBER
F201	MICRO FUSE, 5A	1-532-783-21
F202		



Reference: FPR-N2197



PRINTED IN U.S.A.  
CSA-131292-9

CSA-13 Compact System